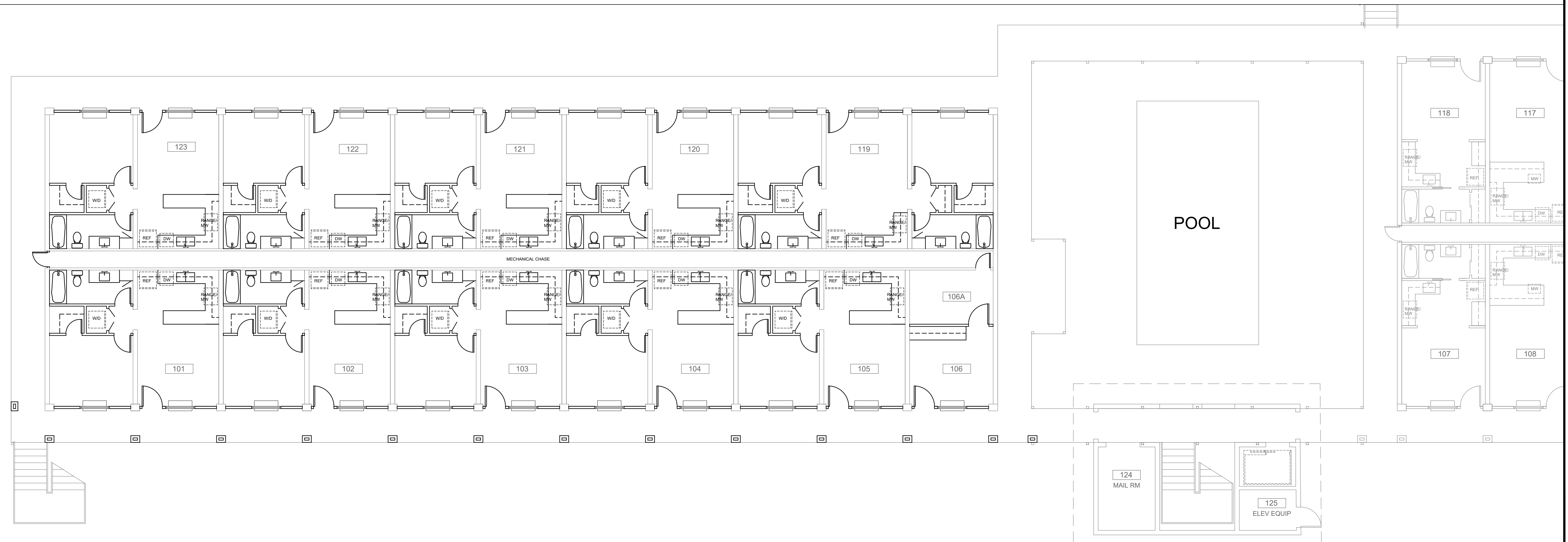


2 2nd Floor-Bldg A
1/8" = 1'-0"



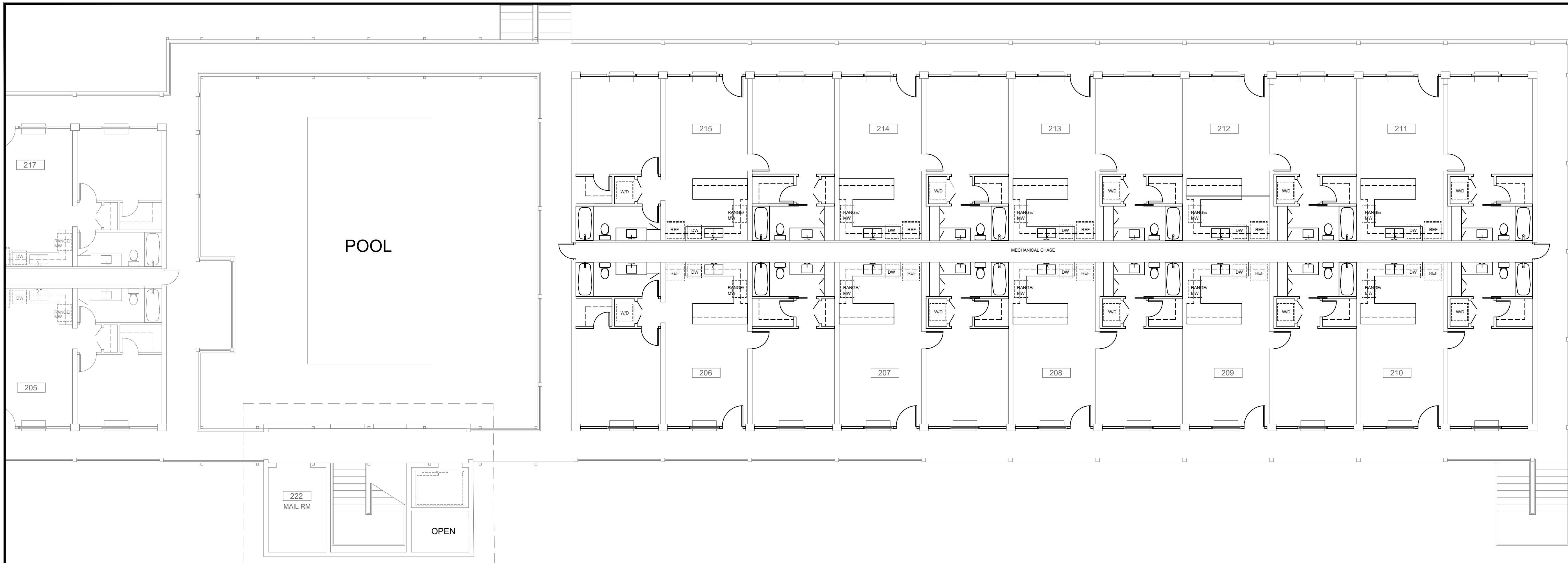
1 1st Floor-Bldg A
1/8" = 1'-0"



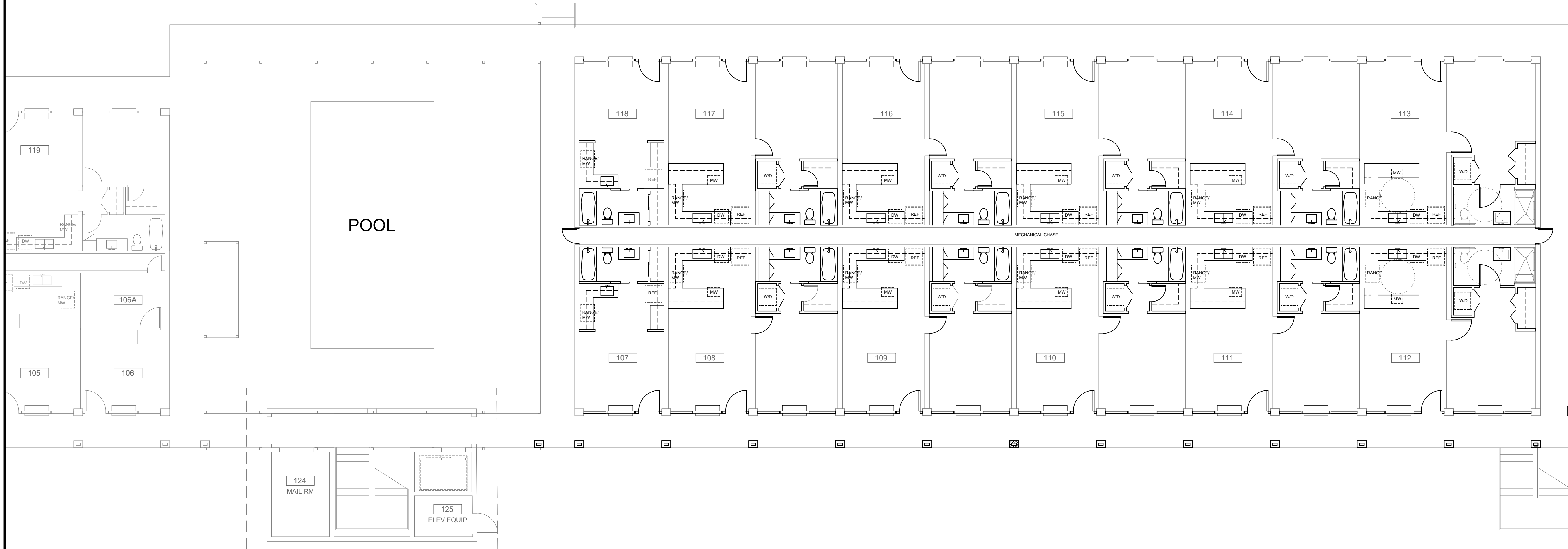
**Renovations to Red River Inn
Alexandria, Louisiana**

Date Issued:	OSFM 12.13.20
Revision Date:	
Drawing Name:	

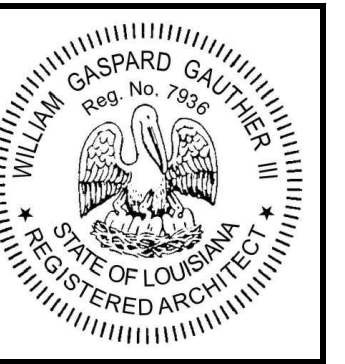
A1.0

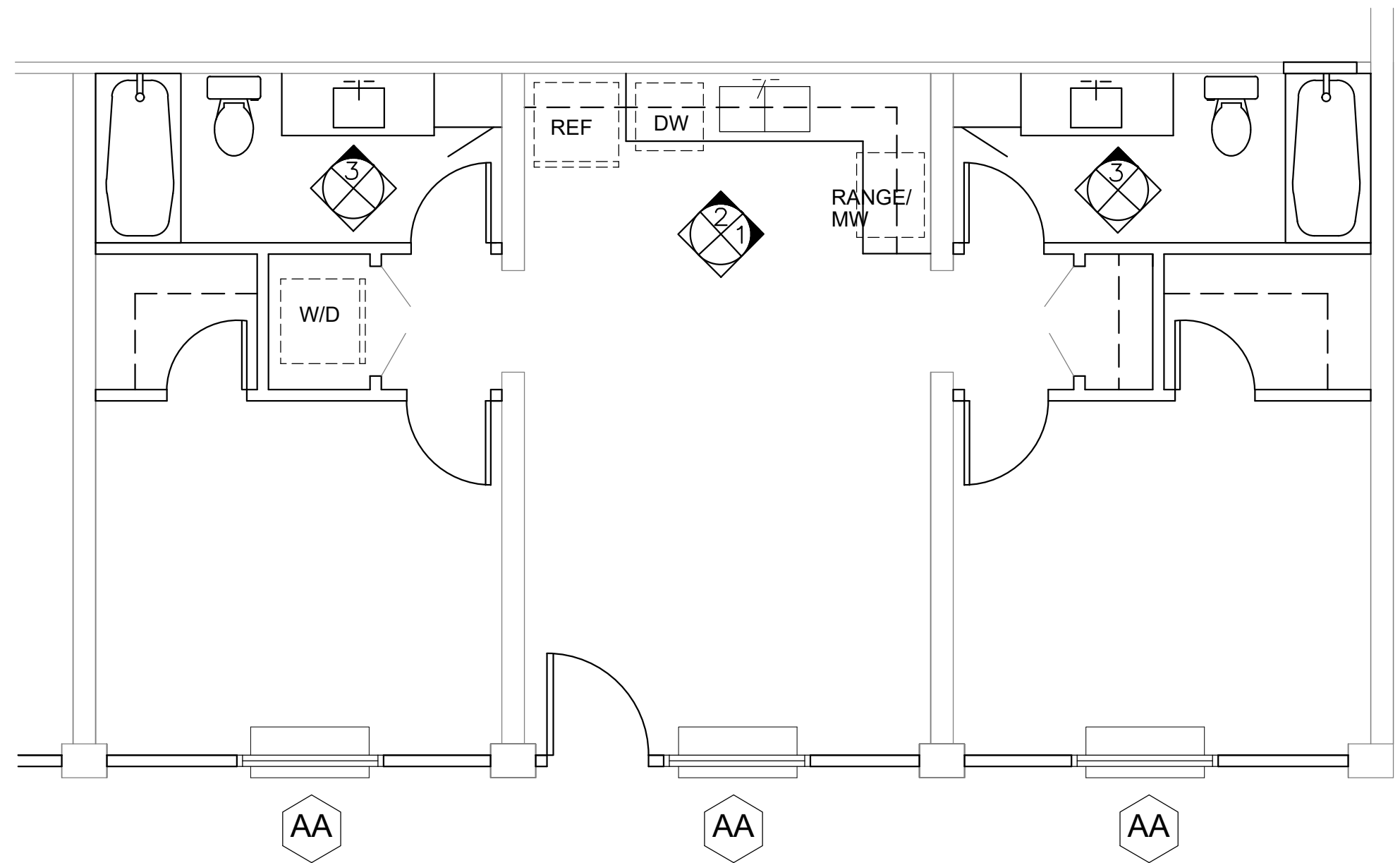


2 2nd Floor-Bldg B
1/8" = 1'-0"

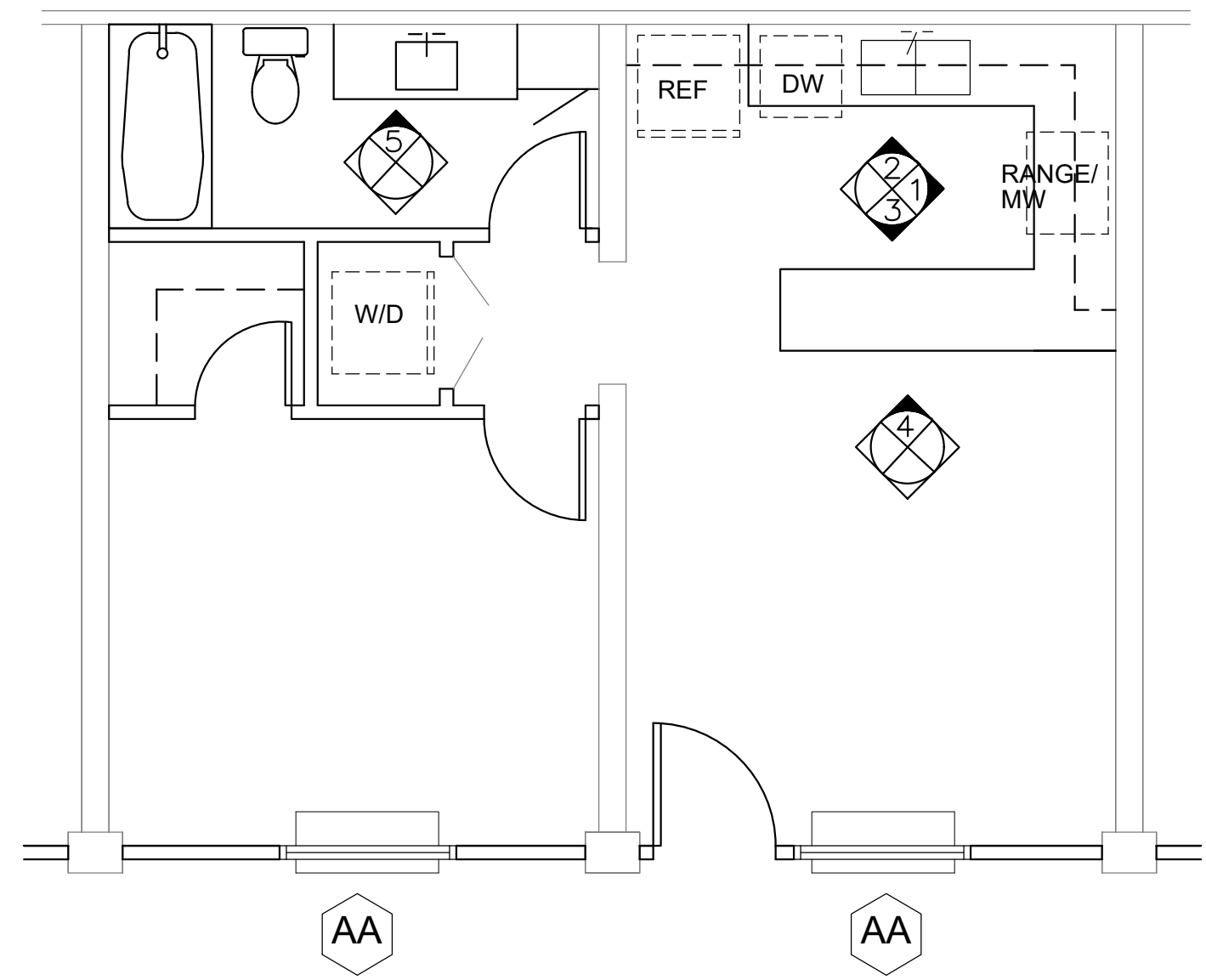


1 1st Floor-Bldg B
1/8" = 1'-0"

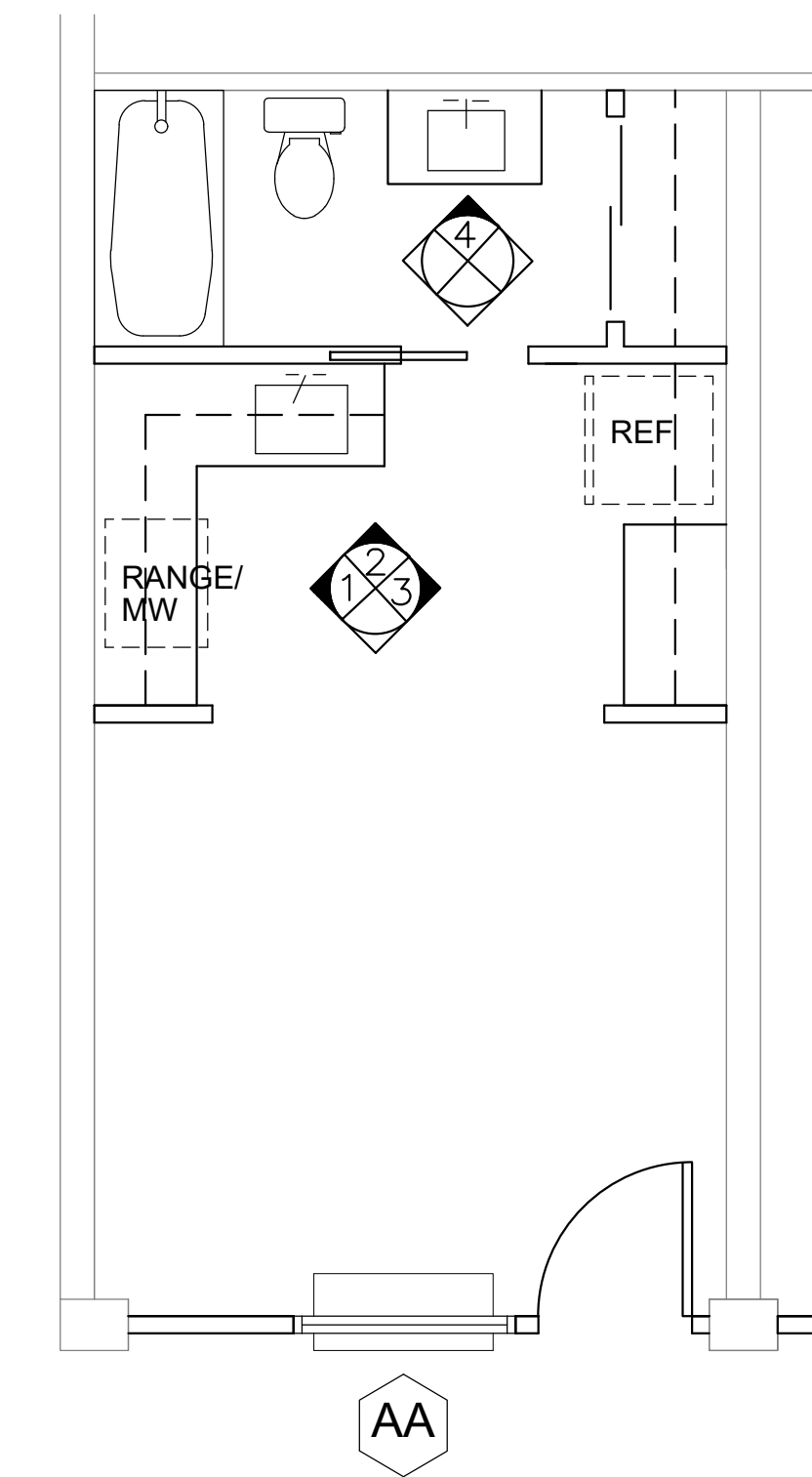




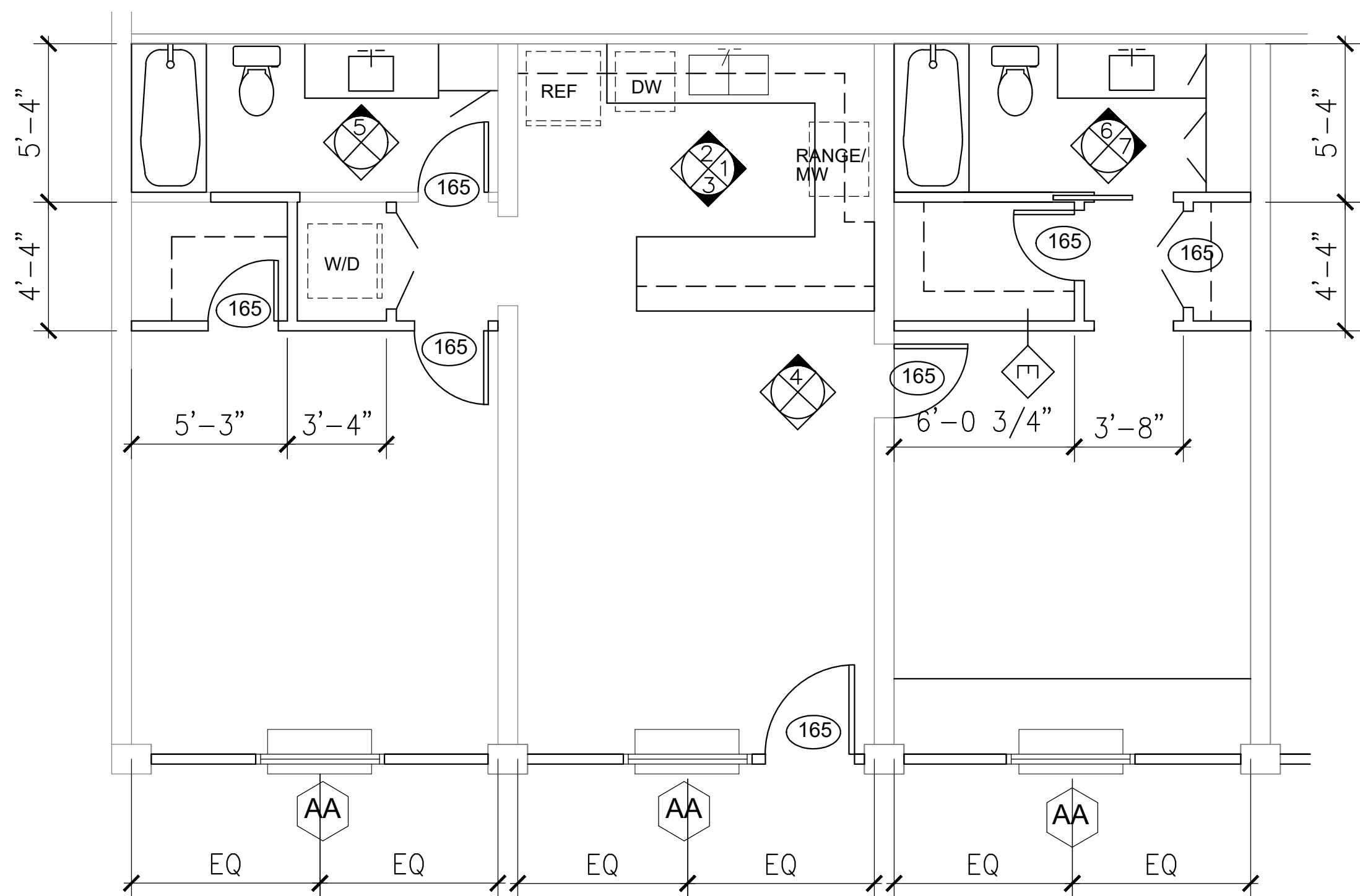
1 Bldg A- 2 BR (Rms 119,205,217)
1/4" = 1'-0"



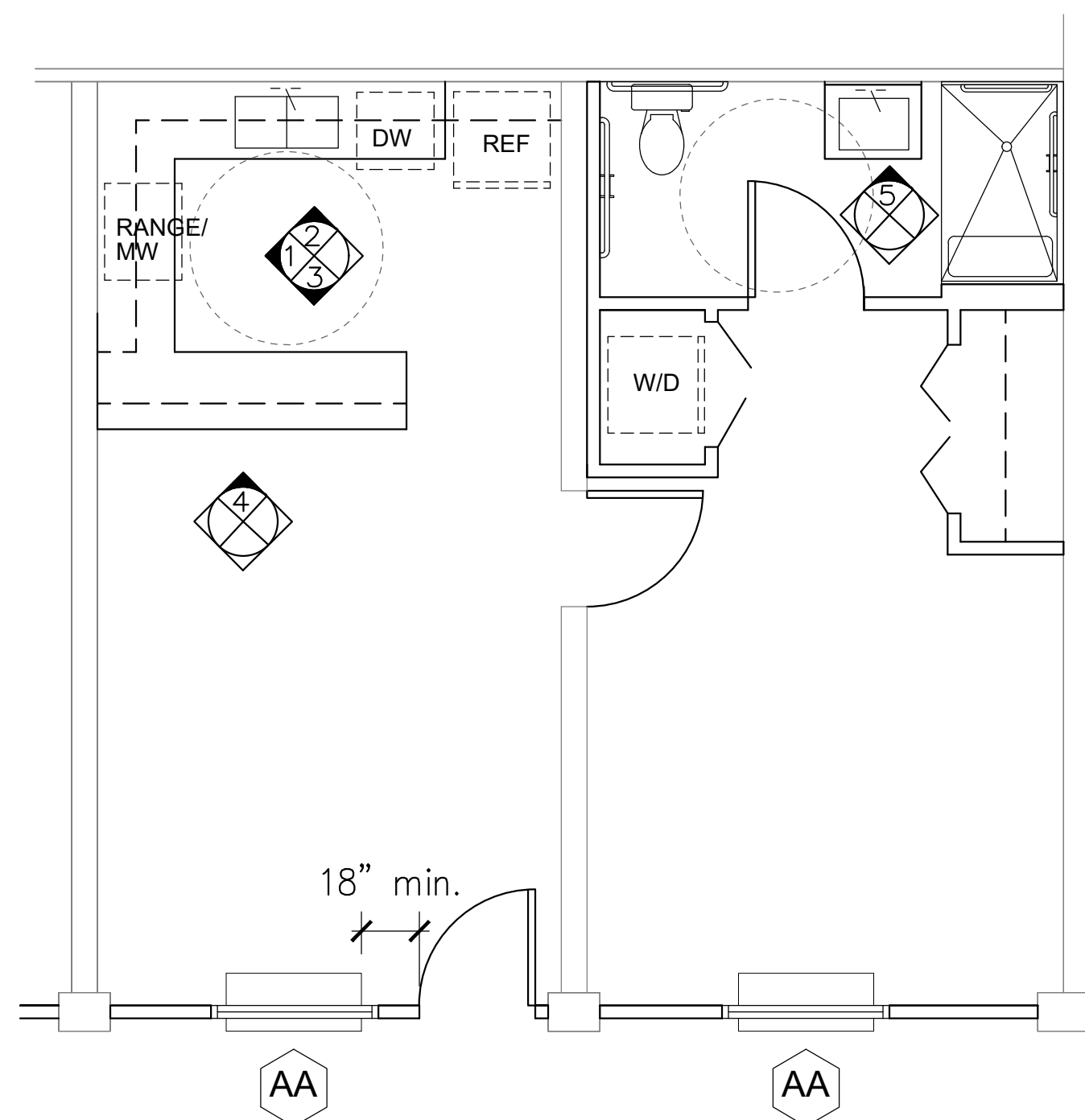
2 Bldg A- 1 BR (Rms 101-105,121-125,
201-204,218-221)
1/4" = 1'-0"



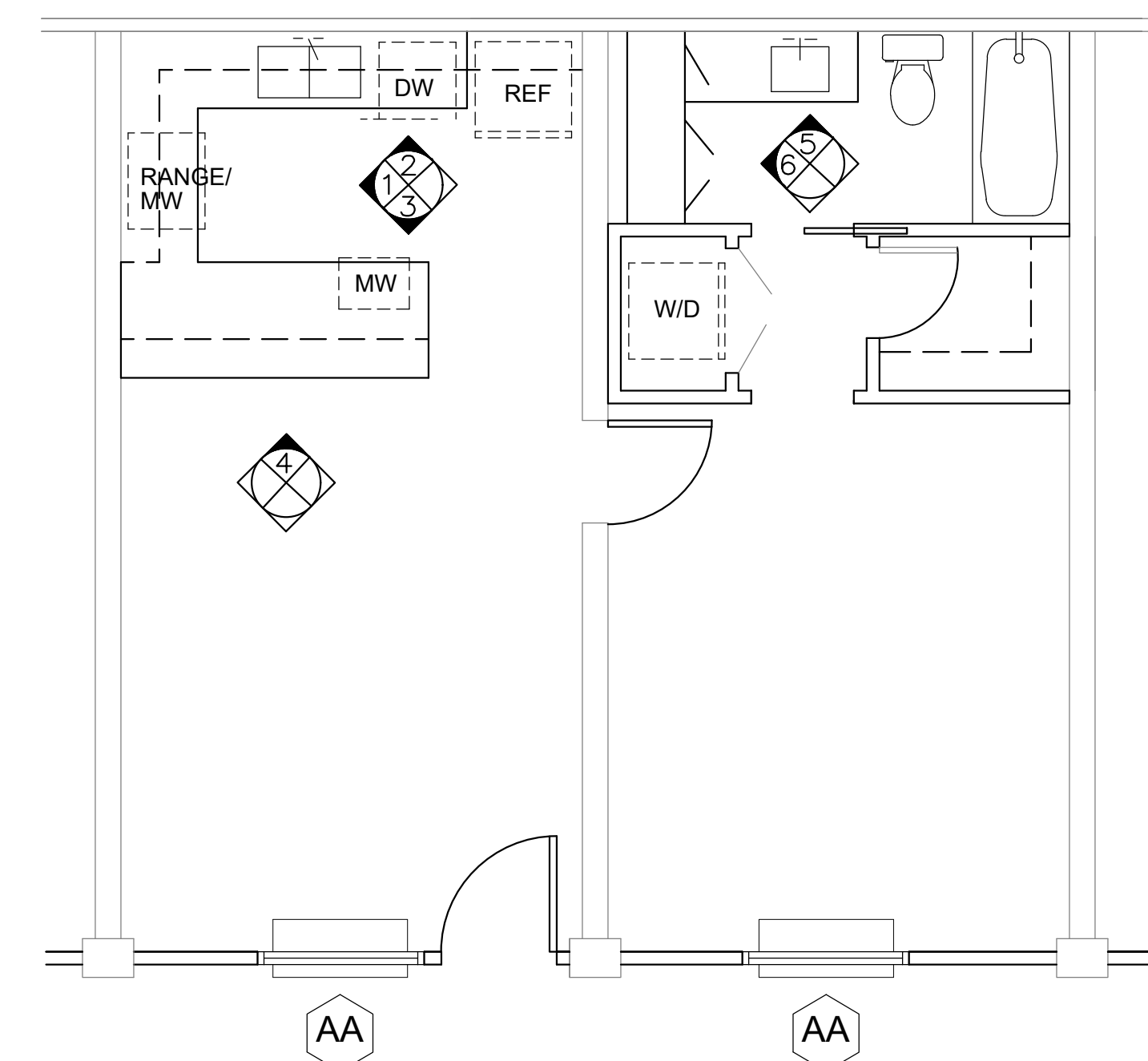
3 Bldg B- Studio (Rms 107,118)
1/4" = 1'-0"



4 Bldg B- 2 BR (Rms 206,215)
1/4" = 1'-0"



5 Bldg B- 1 BR HC (Rms 112,113)
1/4" = 1'-0"



6 Bldg B- 1 BR (Rms 108-111,114-118,
207-214)
1/4" = 1'-0"

